



UNIVERSITY OF  
**LINCOLN**

Human Resources

Human Resources  
Staff & Student Diversity  
2011-2015

# Monitoring and Reporting –

## Staff



UNIVERSITY OF  
LINCOLN

### Gender

	2011/12		2012/13		2013/14		2014/15	
	Female	Male	Female	Male	Female	Male	Female	Male
Academic	42.8%	57.2%	41.9%	58.1%	42.6%	57.4%	42.1%	57.9%
Professional Services	67.7%	32.3%	65.4%	34.6%	65.8%	34.2%	67.5%	32.5%
<b>University</b>	<b>53.8%</b>	<b>46.2%</b>	<b>51.8%</b>	<b>48.2%</b>	<b>52.6%</b>	<b>47.4%</b>	<b>53.0%</b>	<b>47.0%</b>

### Disability

	2011/12		2012/13		2013/14		2014/15	
	Disability	None	Disability	None	Disability	None	Disability	None
Academic	5.9%	94.1%	5.0%	95.0%	4.6%	95.4%	5.0%	95.0%
Professional Services	7.9%	92.1%	7.8%	92.2%	6.7%	93.3%	5.6%	94.4%
<b>University</b>	<b>6.8%</b>	<b>93.2%</b>	<b>6.2%</b>	<b>93.8%</b>	<b>5.5%</b>	<b>94.5%</b>	<b>5.3%</b>	<b>94.7%</b>

### Ethnicity

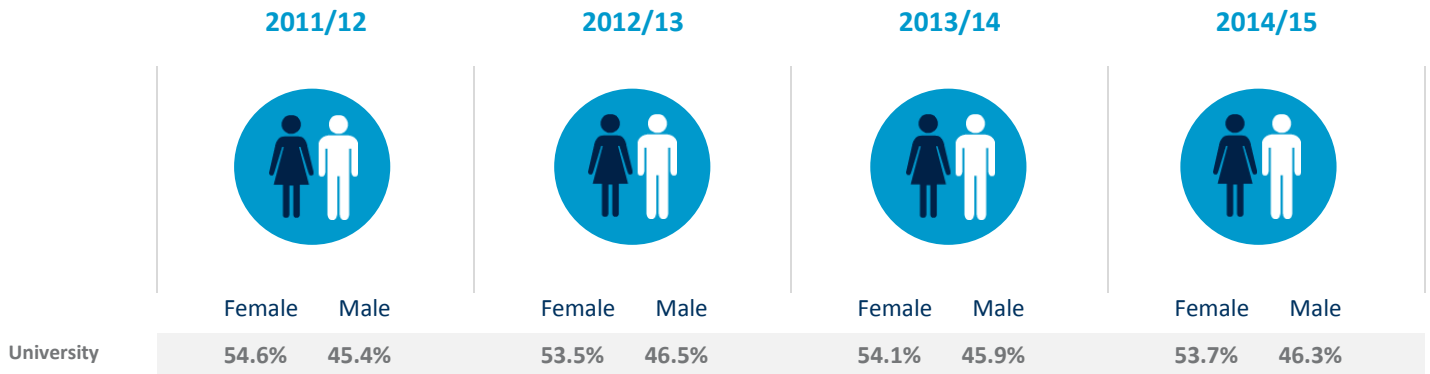
	2011/12		2012/13		2013/14		2014/15	
	BME	Non-BME	BME	Non-BME	BME	Non-BME	BME	Non-BME
Academic	8.7%	91.1%	9.5%	90.5%	9.8%	89.5%	10.7%	87.8%
Professional Services	3.0%	97.0%	2.7%	97.3%	2.2%	97.3%	2.4%	96.9%
<b>University</b>	<b>6.2%</b>	<b>93.7%</b>	<b>6.7%</b>	<b>93.3%</b>	<b>6.5%</b>	<b>92.9%</b>	<b>7.1%</b>	<b>91.7%</b>

\*Does not include 'unknown' or 'N/A' data

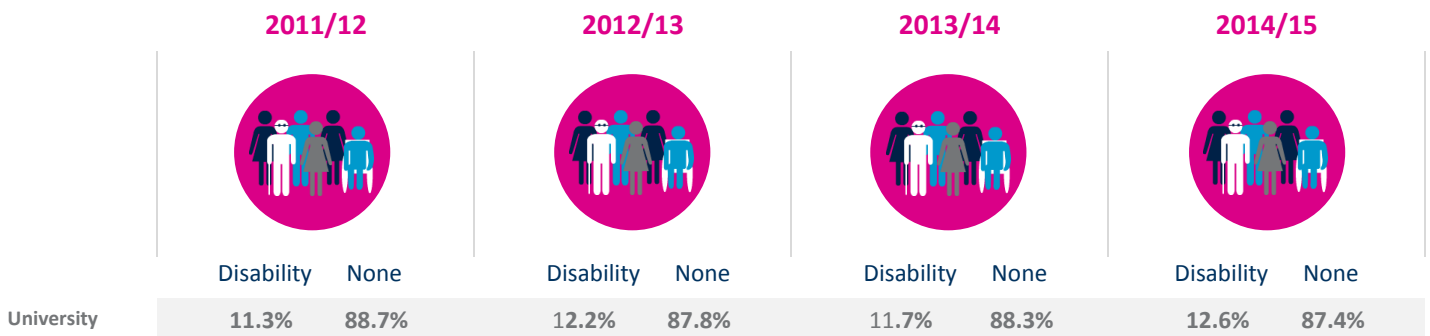
# Monitoring and Reporting – Students



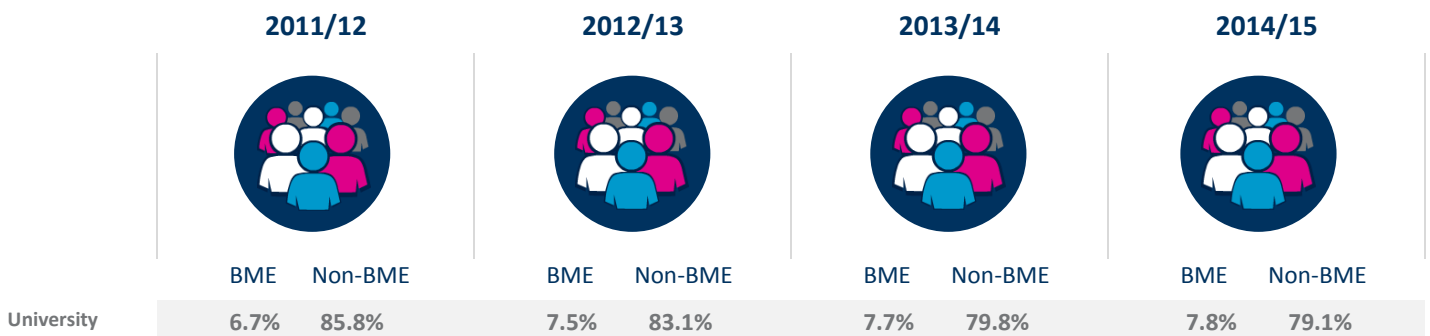
## Gender



## Disability



## Ethnicity



\*Does not include 'unknown' or 'N/A' data